

MONTHLY MEMBERSHIP PROGRESS REPORT

LOCATION INDIANA

District 25 G

Results as of: 7/31/2023

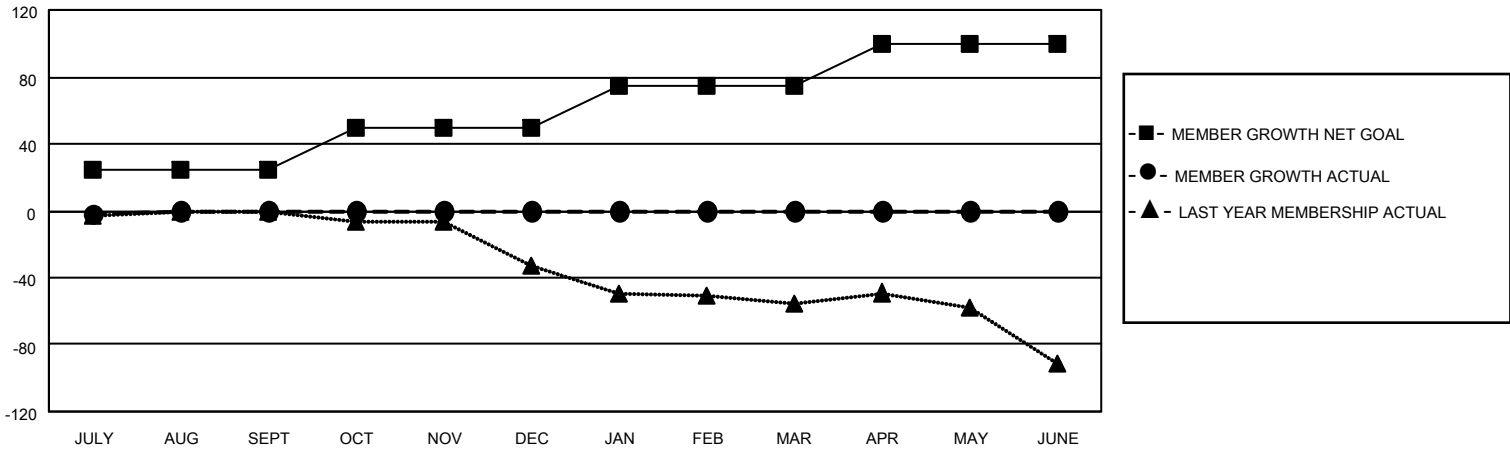
Clubs			
RESULTS FOR 2023-2024			
QUARTER	NEW CLUB GOAL	NEW CLUBS	DROPPED CLUBS
JULY/AUG/SEPT	0	0	0
OCT/NOV/DEC	1	0	0
JAN/FEB/MAR	0	0	0
APR/MAY/JUNE	0	0	0

Members			
RESULTS FOR 2023-2024			
QUARTER	MEMBER GROWTH NET GOAL	MEMBER GROWTH ACTUAL	DROPPED MEMBERS ACTUAL (including transfers)
JULY/AUG/SEPT	25	3	5
OCT/NOV/DEC	25	0	0
JAN/FEB/MAR	25	0	0
APR/MAY/JUNE	25	0	0

GOALS AND ACTUAL NEW CLUBS CUMULATIVE



GOALS AND ACTUAL MEMBERS CUMULATIVE



DROPPED CLUBS: 0

3 CLUBS OF 45 ADDED 1 OR MORE NEW MEMBERS

GENDER DISTRIBUTION

MALE	802 (69.02%)
FEMALE	360 (30.98%)
NON BINARY	0 (0.00%)
PREFER NOT TO ANSWER	0 (0.00%)

DROPPED MEMBERS

[CLICK HERE FOR CUMULATIVE MEMBERSHIP DATA](#)

DECEASED	0
CLUB CANCELLED	0
OTHER	5
TOTAL	5

TOTAL FAMILY UNIT MEMBERS 256

FAMILY MEMBERS PAYING HALF DUES 130